

## Estudio CardioVex Holter - ECG de 3 canales

Paciente RAMON REYES VERA  
Sexo Masculino Edad 79 Peso --- Estatura ---  
N° historia clínica --- Cobertura médica --- Teléfono ---  
Dirección --- Localidad --- Provincia D.F.  
Fecha/hora inicio grabación 01/05/2017 11:40

Doctor DR.GARDUÑO Referido por ---

Indicación/motivo ---

Medicación/tratamiento ---

Observaciones ---

### Frecuencia cardíaca

Media: 86 lpm  
Mínima: 66 lpm a las 07:48:00  
Máxima: 110 lpm a las 19:23:30

### Extrasístoles ventriculares

Total: 160 latidos Bigem.: 4 eventos  
Pares: 0 eventos Trigem.: 2 eventos  
Taquicardias: 0 eventos  
Taq. más extensa: 0 latidos a las ---

### Extrasístoles supraventriculares

Total: 1078 latidos  
Pares: 17 eventos  
Taquicardias: 6 eventos  
Taq. más extensa: 3 latidos a las 17:16:18

### Análisis de variabilidad de la frecuencia cardíaca

SDNN: 69 ms. RMSSD: 18 ms.  
SDNN index: 23 ms. PNN50: 2 %  
SDANN index: 64 ms.

### Latidos - morfologías

Normal: 120936 - (98.99%)  
Ventricular: 160 - (0.13%)  
Supra ventricular: 1078 - (0.88%)

Total de latidos clasificados: 122174

Promedio	Desnivel ST	Intervalo QT
----------	-------------	--------------

Canal 1:	-5.5 mm.	307 ms.
Canal 2:	-1.4 mm.	335 ms.
Canal 3:	-0.8 mm.	312 ms.

10 mm = 1 mV

### Bradicardia - pausas

Bradicardia (FC < 60 bpm): 0 eventos  
Pausas (RR > 2.0 seg.): 0 eventos

### Conclusiones

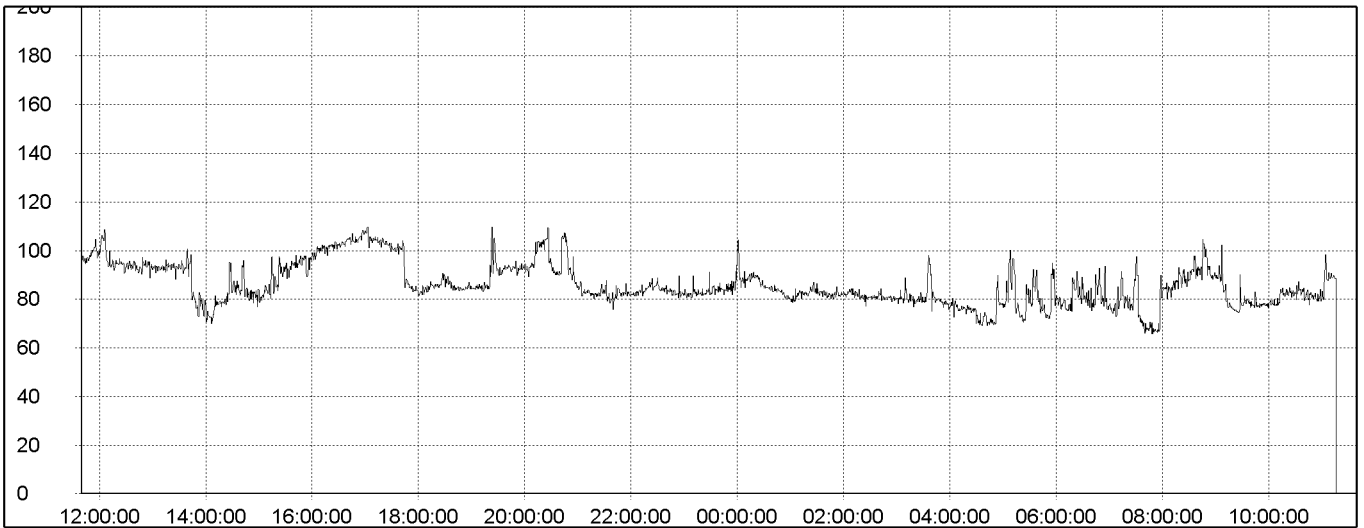
**Sumario 24 hs.**

Hora (ini)	Latidos	Frecuencia cardíaca			Ventriculares			Supra ventriculares			Bigem.	Trigem
		Mín.	Med.	Máx.	Total	Pares	Taq.	Total	Pares	Taq.		
11:40	5829	91	97	109	7	-	-	44	-	-	-	-
12:40	5616	88	93	101	13	-	-	44	1	-	-	-
13:40	4840	70	81	98	4	-	-	18	1	-	-	-
14:40	5209	77	87	98	7	-	-	22	-	-	-	-
15:40	5957	89	99	105	14	-	-	56	1	-	1	-
16:40	6253	99	104	110	12	-	-	48	1	1	1	-
17:40	5211	82	87	104	7	-	-	22	-	-	-	-
18:40	5283	83	88	110	3	-	-	34	2	-	-	-
19:40	5747	89	96	110	9	-	-	45	1	-	2	-
20:40	5221	78	87	108	2	-	-	31	1	-	-	-
21:40	5025	76	84	89	4	-	-	46	-	1	-	-
22:40	4997	81	83	92	1	-	-	43	1	1	-	-
23:40	5239	82	87	104	5	-	-	59	-	-	-	-
00:40	4969	79	83	87	1	-	-	61	-	-	-	-
01:40	4930	77	82	85	6	-	-	63	1	-	-	-
02:40	4909	77	82	98	5	-	-	46	-	1	-	-
03:40	4614	69	77	83	4	-	-	43	-	-	-	-
04:40	4781	69	79	100	9	-	-	45	-	-	-	-
05:40	4818	72	80	95	8	-	-	79	2	-	-	-
06:40	4819	68	80	98	7	-	-	55	-	-	-	-
07:40	4922	66	82	98	20	-	-	69	1	-	-	2
08:40	5132	75	85	105	7	-	-	61	2	1	-	-
09:40	4831	76	80	87	2	-	-	24	-	1	-	-
10:40	3058	78	85	98	3	-	-	20	2	-	-	-

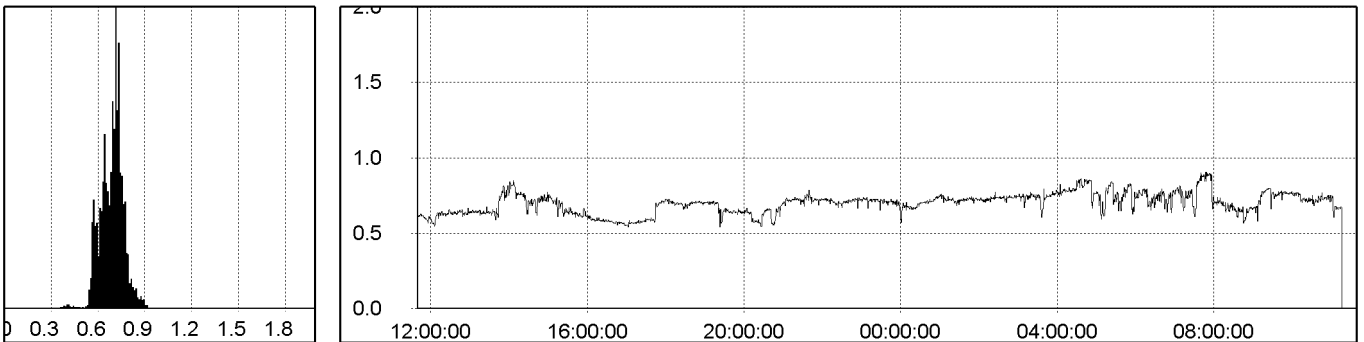
**Bradycardia (FC < 60 bpm) - pausas (RR > 2.0 seg.)**

Hora (ini)	FC mín.	Brad. eventos	Brad. latidos	Pausas
11:40	91	-	-	-
12:40	88	-	-	-
13:40	70	-	-	-
14:40	77	-	-	-
15:40	89	-	-	-
16:40	99	-	-	-
17:40	82	-	-	-
18:40	83	-	-	-
19:40	89	-	-	-
20:40	78	-	-	-
21:40	76	-	-	-
22:40	81	-	-	-
23:40	82	-	-	-
00:40	79	-	-	-
01:40	77	-	-	-
02:40	77	-	-	-
03:40	69	-	-	-
04:40	69	-	-	-
05:40	72	-	-	-
06:40	68	-	-	-
07:40	66	-	-	-
08:40	75	-	-	-
09:40	76	-	-	-
10:40	78	-	-	-

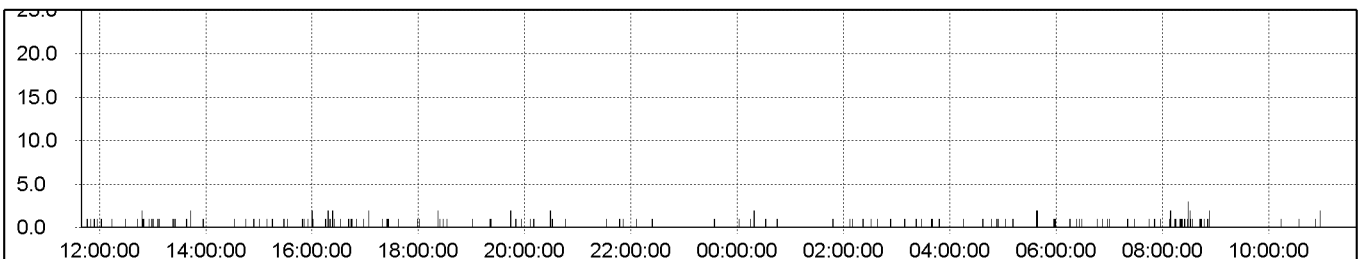
**Frecuencia cardíaca - tendencia 24 hs.**



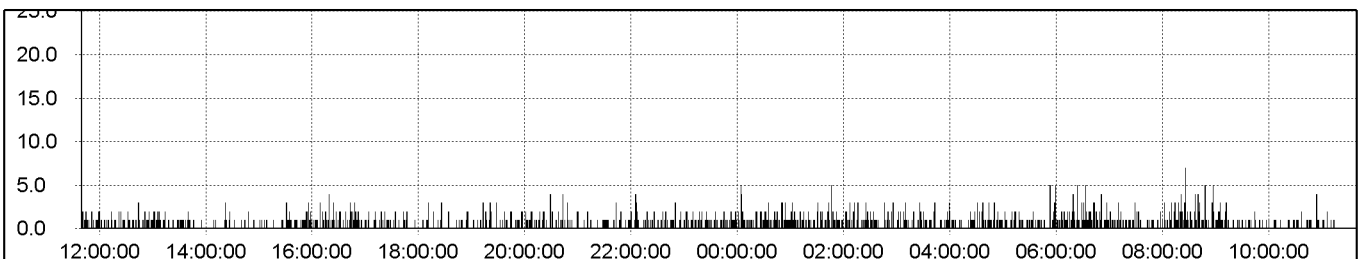
**Intervalos RR (todos los latidos) - Distribución / tendencia 24 hs.**



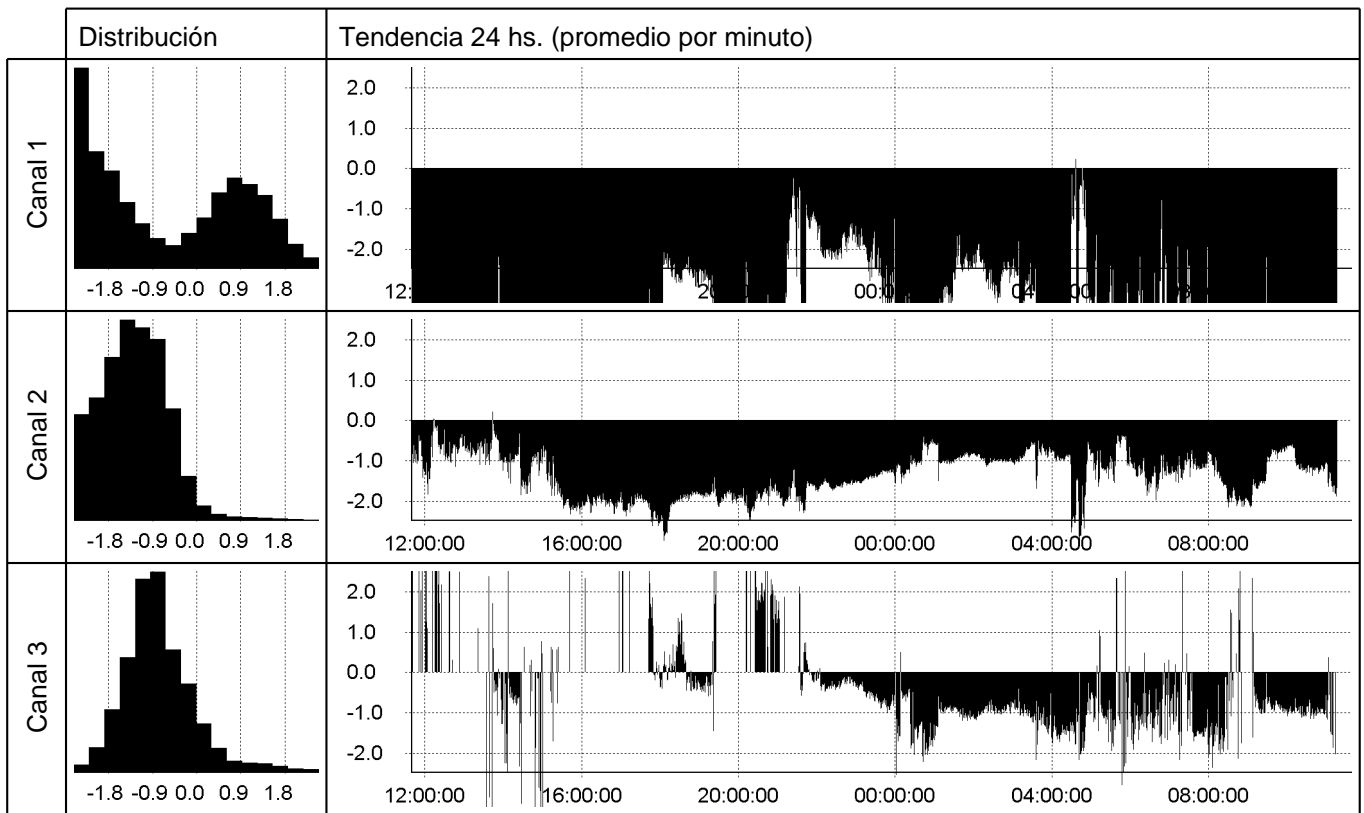
**Eventos ventriculares por minuto**



**Eventos supraventriculares por minuto**



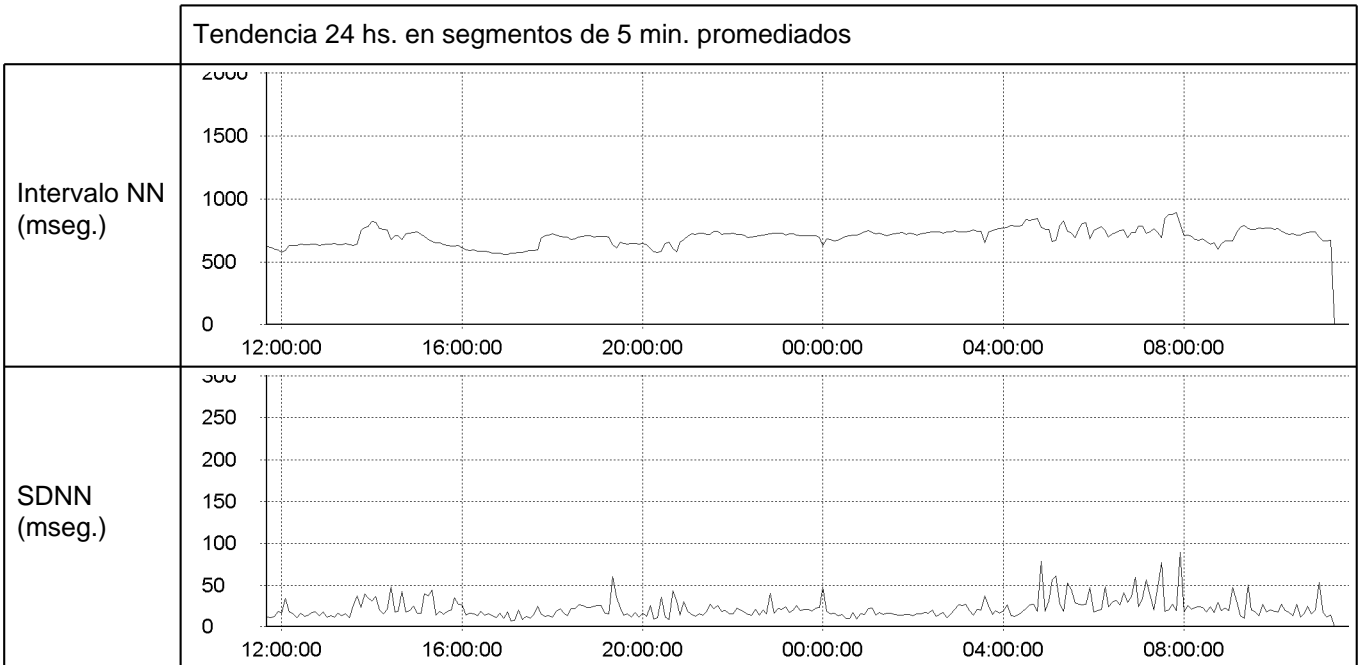
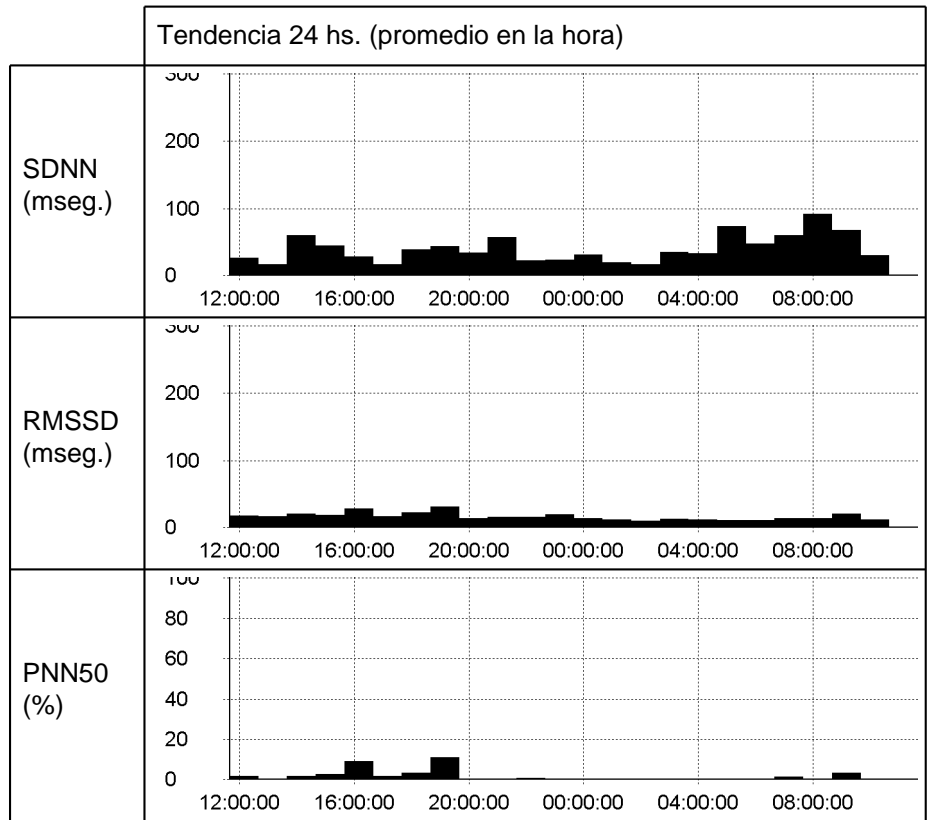
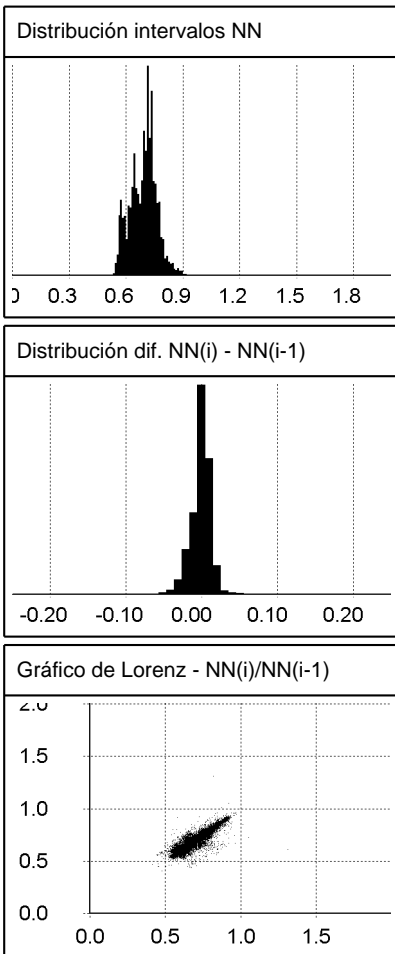
**Análisis ST**



**Análisis ST - sumario 24 hs.**

Hora (ini)	Nivel ST prom. (mm.)			Eventos ST			Máx. elevación			Máx. depresión		
	Canal 1	Canal 2	Canal 3	Canal 1	Canal 2	Canal 3	Canal 1	Canal 2	Canal 3	Canal 1	Canal 2	Canal 3
11:40	-9.3	-0.8	3.1	60	16	19	-	0.0	5.6	10.8	1.8	-
12:40	-8.4	-0.7	0.6	60	6	5	-	-	2.5	9.8	1.2	3.4
13:40	-5.7	-1.0	-0.5	60	29	12	-	0.2	3.1	8.2	1.9	5.9
14:40	-5.9	-1.4	-0.8	60	45	8	-	-	0.8	8.8	2.2	4.5
15:40	-9.3	-2.1	3.0	60	60	2	-	-	4.2	10.3	2.3	-
16:40	-8.0	-2.1	3.7	60	60	4	-	-	4.2	10.3	2.4	-
17:40	-4.8	-2.2	0.2	60	60	12	-	-	2.7	8.9	3.0	0.4
18:40	-3.6	-1.9	-0.3	60	60	5	-	-	4.8	6.6	2.2	1.5
19:40	-6.0	-2.0	2.0	60	60	17	-	-	4.1	7.7	2.5	-
20:40	-4.4	-1.8	0.2	52	60	20	-	-	2.9	9.1	2.3	0.6
21:40	-2.1	-1.7	-0.2	59	60	-	-	-	0.7	7.5	2.3	0.5
22:40	-2.0	-1.5	-0.4	60	60	-	-	-	-	2.8	1.6	0.9
23:40	-4.8	-1.2	-0.9	60	55	23	-	-	0.5	7.9	1.6	2.6
00:40	-4.6	-0.9	-1.1	60	23	28	-	-	-	7.4	1.5	2.2
01:40	-2.5	-0.9	-1.0	60	15	32	-	-	-	3.4	1.2	1.2
02:40	-3.0	-0.9	-0.9	60	22	24	-	-	-	6.6	1.7	2.2
03:40	-6.2	-1.1	-1.4	56	13	55	0.2	-	-	7.7	2.8	1.8
04:40	-4.1	-1.3	-1.0	53	44	38	0.0	-	2.3	8.9	3.1	2.2
05:40	-5.1	-1.1	-1.1	60	42	40	-	-	2.7	7.3	2.0	2.8
06:40	-5.0	-1.2	-1.1	59	48	29	-	-	3.3	8.9	1.8	2.2
07:40	-6.6	-1.4	-1.5	60	53	49	-	-	1.6	8.8	2.2	2.4
08:40	-7.1	-1.7	-0.8	60	51	12	-	-	5.3	10.3	2.2	2.1
09:40	-6.6	-0.9	-0.9	60	26	14	-	-	-	10.1	1.4	1.2
10:40	-8.3	-1.4	-1.0	37	37	17	-	-	0.4	10.0	1.9	2.0

**Variabilidad de la frecuencia cardíaca**



**Variabilidad de la frecuencia cardíaca - sumario 24 hs.**

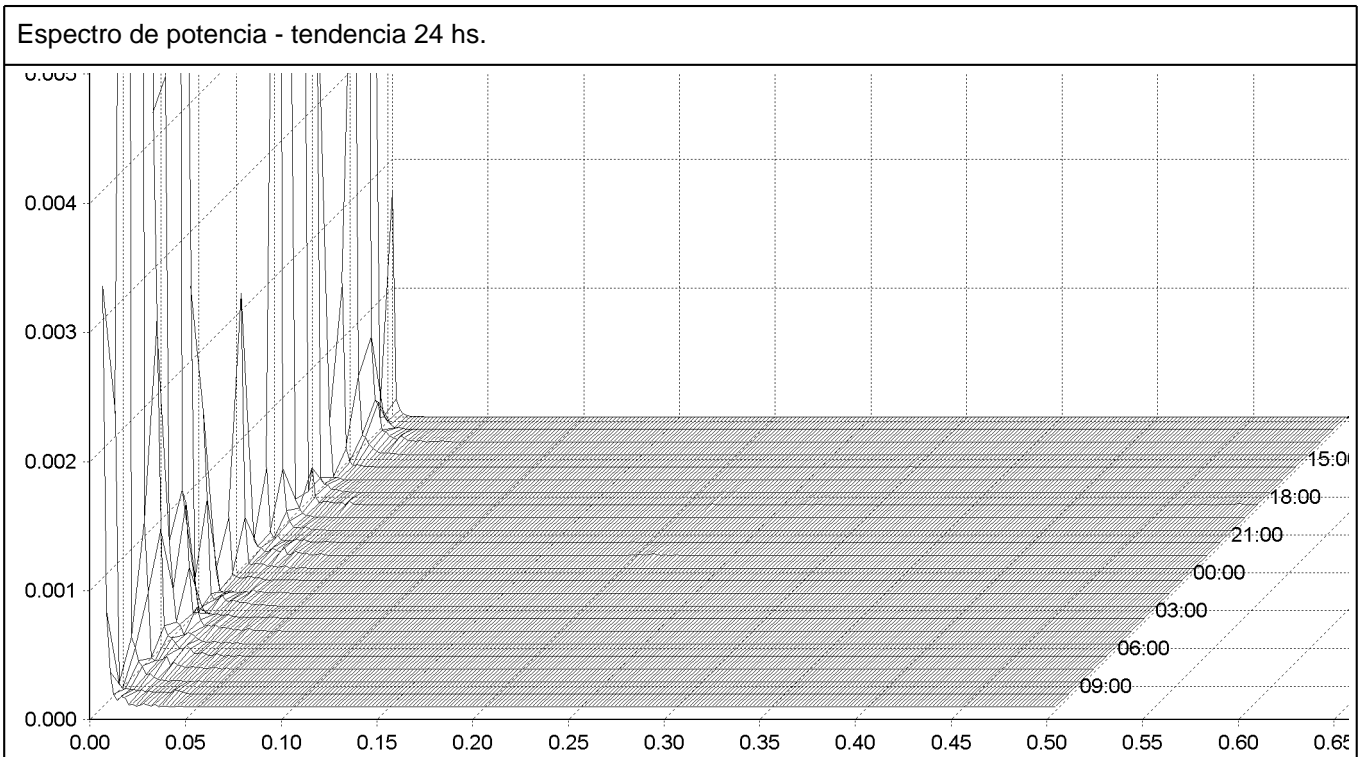
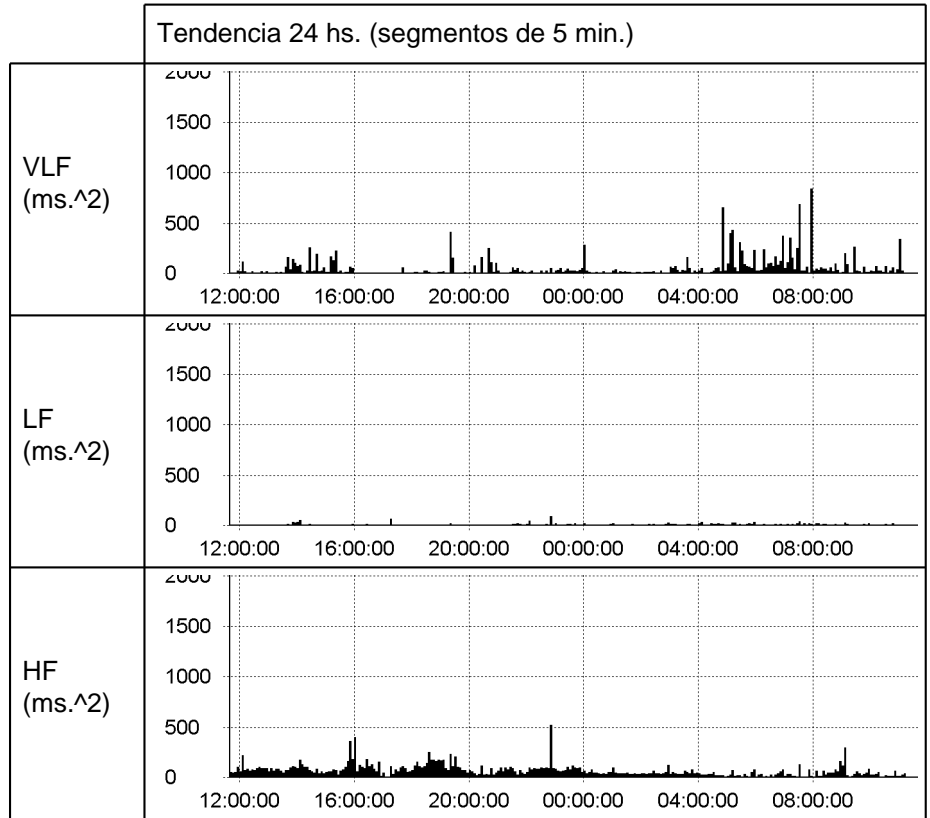
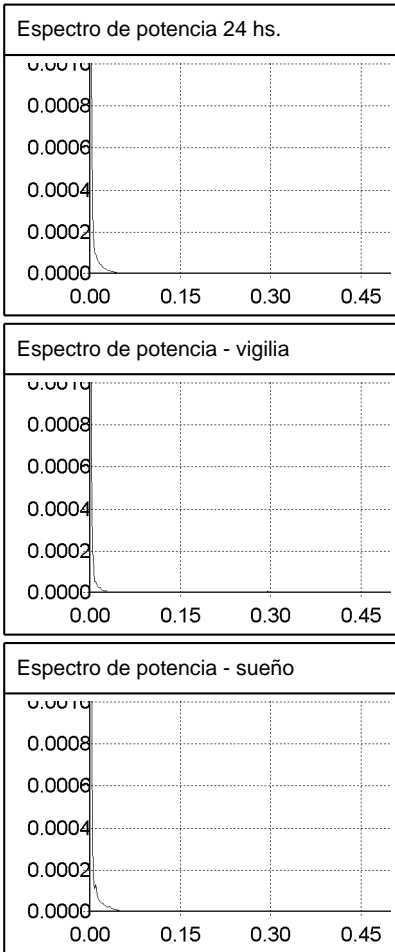
Hora (ini)	#Latidos NN / total	FC med. (bpm)	NN med. (ms)	SDNN (ms)	RMSSD (ms)	PNN50 (%)
11:40	5721 / 5829	97	617	27	19	2
12:40	5503 / 5616	93	641	17	18	1
13:40	4797 / 4840	81	744	60	21	2
14:40	5151 / 5209	87	691	45	19	3
15:40	5815 / 5957	99	604	28	29	9
16:40	6134 / 6253	104	576	17	18	2
17:40	5149 / 5211	87	690	39	23	3
18:40	5211 / 5283	88	681	44	32	11
19:40	5637 / 5747	96	626	34	14	0
20:40	5149 / 5221	87	690	57	17	1
21:40	4921 / 5025	84	716	23	16	1
22:40	4912 / 4997	83	720	24	20	1
23:40	5111 / 5239	87	688	31	14	1
00:40	4845 / 4969	83	725	20	12	0
01:40	4793 / 4930	82	730	17	11	0
02:40	4807 / 4909	82	734	36	13	0
03:40	4519 / 4614	77	781	34	13	0
04:40	4666 / 4781	79	754	73	11	0
05:40	4648 / 4818	80	750	48	12	1
06:40	4688 / 4819	80	748	60	15	2
07:40	4746 / 4922	82	734	92	14	1
08:40	4999 / 5132	85	703	68	21	3
09:40	4781 / 4831	80	745	31	13	1
10:40	3014 / 3058	85	709	40	11	0

Total	24 hs.	Vigilia	Sueño
<b>SDNN (ms.)</b>	69	66	50
<b>SDNN index (ms.)</b>	23		
<b>SDANN index (ms.)</b>	64		
<b>RMSSD (ms.)</b>	18	21	13
<b>PNN50 (%)</b>	2	3	0
<b>TINN index (ms.)</b>	1125		
<b>HRV index</b>	14		

**Riesgo**

<< SDNN 24hs. = 69 ms.

### Variabilidad de la frecuencia cardíaca - potencia espectral



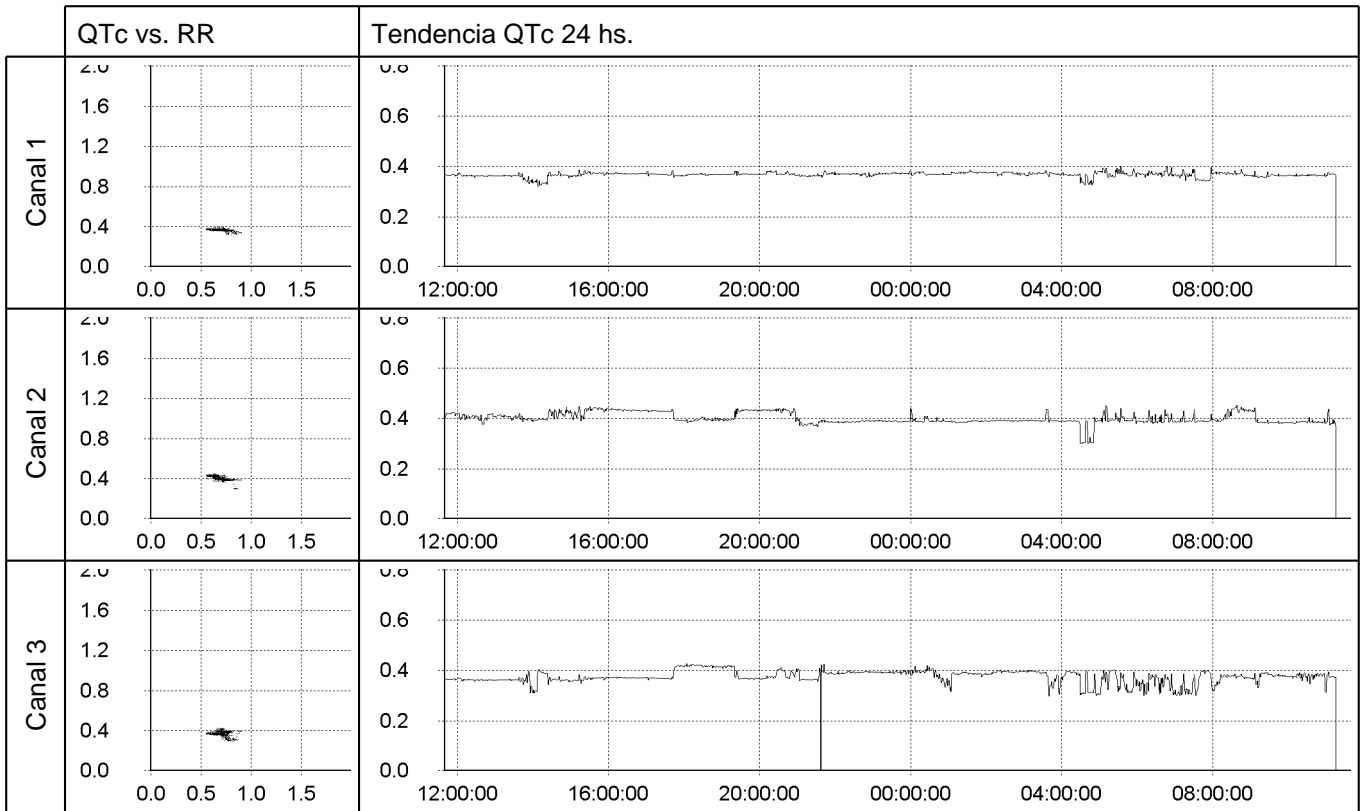
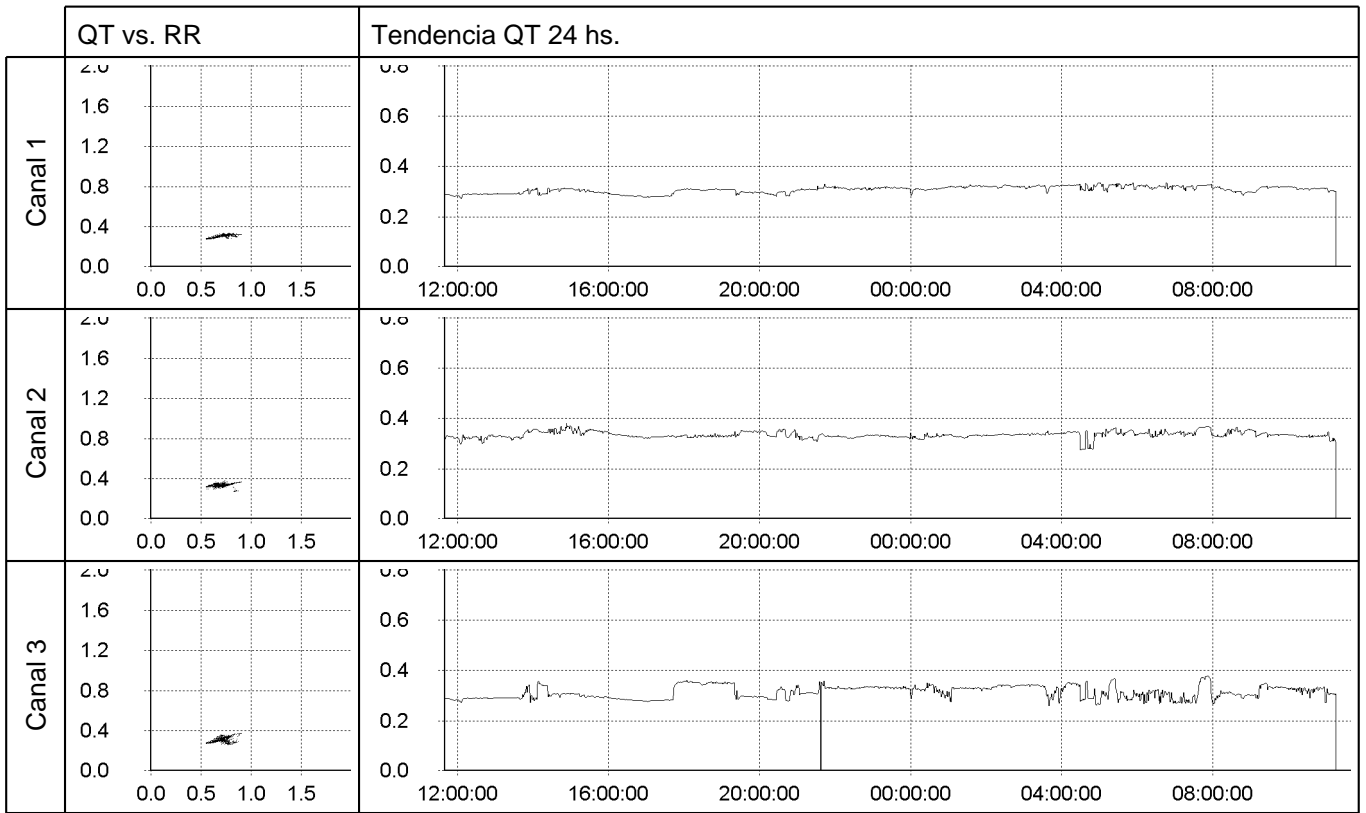
**Variabilidad de la frecuencia cardíaca - potencia espectral - sumario 24 hs.**

Hora (ini)	ULF (ms <sup>2</sup> )	VLF (ms <sup>2</sup> )	LF (ms <sup>2</sup> )	LF norm	HF (ms <sup>2</sup> )	HF norm	LF/HF	Total
11:40	10	21	5	6	88	94	0.06	125
12:40	1	19	5	6	93	94	0.06	118
13:40	55	135	24	16	122	84	0.19	335
14:40	28	83	11	14	69	86	0.16	191
15:40	8	22	10	5	172	95	0.06	211
16:40	3	7	10	11	75	89	0.13	95
17:40	23	29	8	6	131	94	0.06	192
18:40	27	51	13	7	173	93	0.08	264
19:40	20	25	6	8	62	92	0.09	112
20:40	58	65	10	11	84	89	0.12	217
21:40	3	31	19	17	92	83	0.21	145
22:40	1	43	25	15	148	85	0.17	217
23:40	12	53	14	15	80	85	0.17	159
00:40	3	24	15	20	62	80	0.25	104
01:40	1	21	16	23	54	77	0.29	91
02:40	9	106	19	23	65	77	0.29	198
03:40	15	56	26	31	57	69	0.45	154
04:40	77	236	28	42	38	58	0.74	380
05:40	25	145	19	37	32	63	0.58	221
06:40	24	326	25	33	51	67	0.50	426
07:40	158	171	25	35	47	65	0.54	401
08:40	89	86	17	15	99	85	0.18	291
09:40	12	40	16	27	44	73	0.37	113
10:40	18	105	16	29	38	71	0.41	177

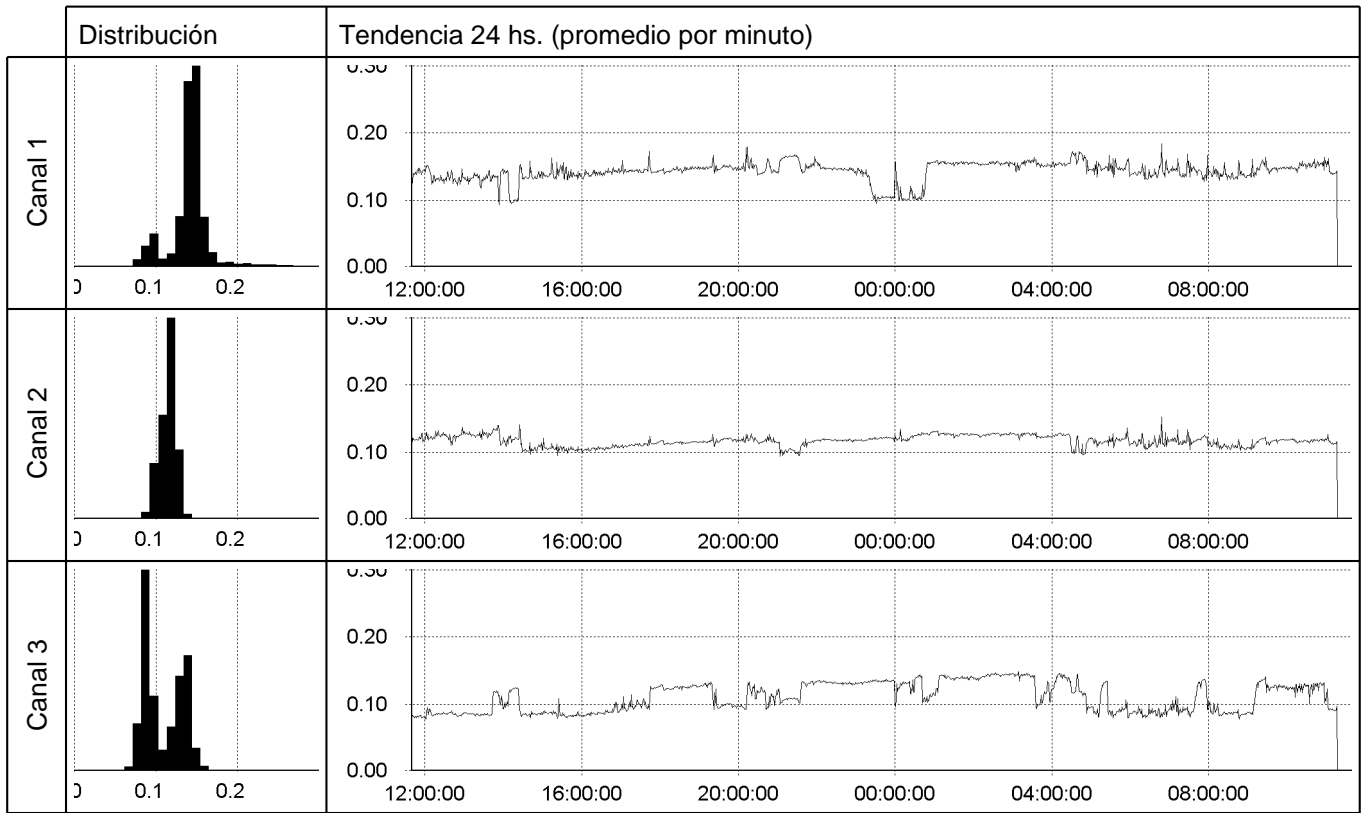
<b>Total</b>	<b>24 hs.</b>	<b>Vigilia</b>	<b>Sueño</b>
<b>ULF (ms<sup>2</sup>)</b>	99	92	43
<b>VLF (ms<sup>2</sup>)</b>	81	49	94
<b>LF (ms<sup>2</sup>)</b>	16	11	19
<b>LF norm</b>	15	9	25
<b>HF (ms<sup>2</sup>)</b>	89	109	58
<b>HF norm</b>	85	91	75
<b>LF/HF</b>	0.18	0.10	0.33
<b>Total potencia</b>	285	262	214



**Análisis intervalo QT**



**Análisis intervalo PR**



**AVA - 25 mm/seg, 10 mm/mV**



**AASV - 25 mm/seg, 10 mm/mV**



**PSEUDONORMALIZACION DE ONDA T - 25 mm/seg, 10 mm/mV**



- 25 mm/seg, 10 mm/mV



- 25 mm/seg, 10 mm/mV



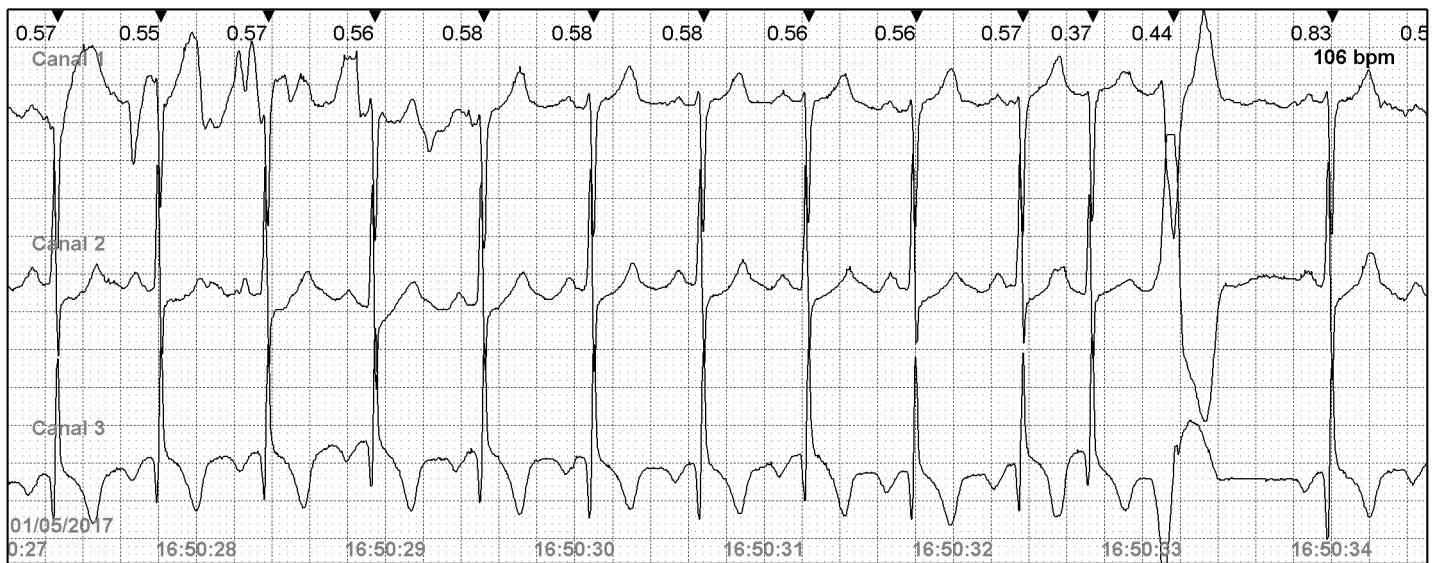
- 25 mm/seg, 10 mm/mV



**AASV PAREADO - 25 mm/seg, 10 mm/mV**



**- 25 mm/seg, 10 mm/mV**



**ISQUEMIQ SILENTE - 25 mm/seg, 10 mm/mV**



- 25 mm/seg, 10 mm/mV



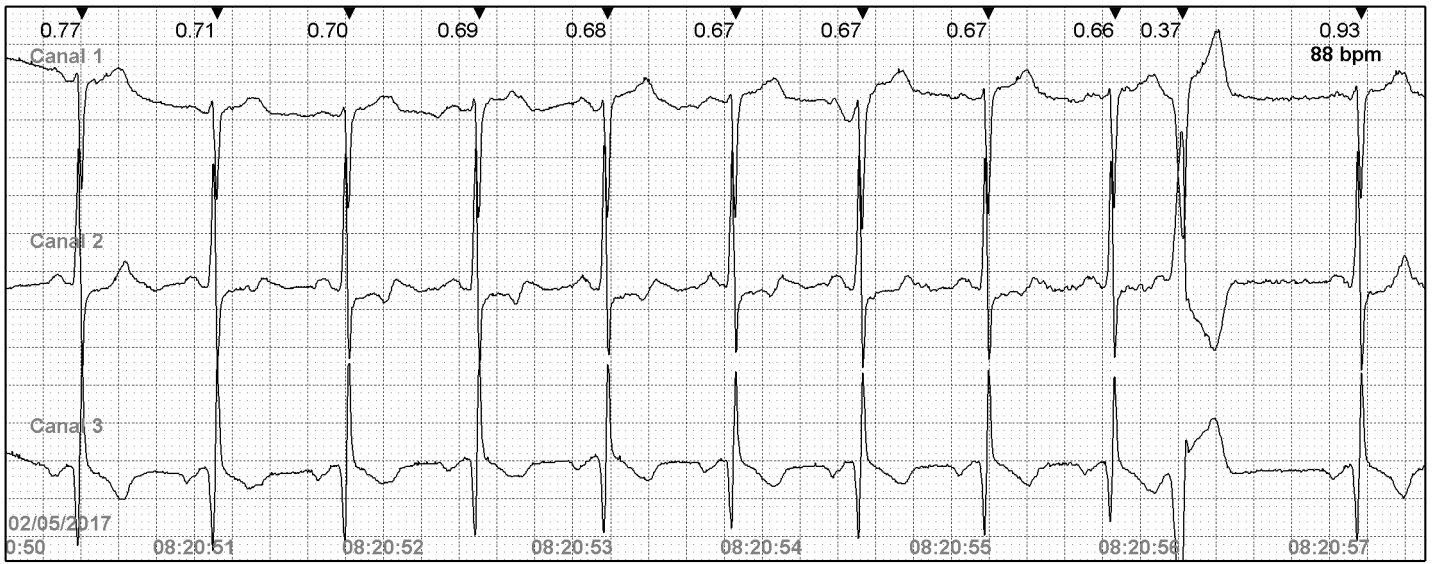
- 25 mm/seg, 10 mm/mV



- 25 mm/seg, 10 mm/mV



- 25 mm/seg, 10 mm/mV



- 25 mm/seg, 10 mm/mV

